

# Your lawn can't breathe!



**We can help by aerating.**

**CALL TODAY  
TO SCHEDULE THIS IMPORTANT SERVICE.**

Professional Design & Planning  
Retaining Walls  
Paver Patios  
& Walkways  
Trees, Shrubs, Flowers  
Rock & Soil • Lawn Mowing & Sodding  
Fertilizing Programs • Licensed & Insured



**CREATING UNIQUE OUTDOOR ENVIRONMENTS**

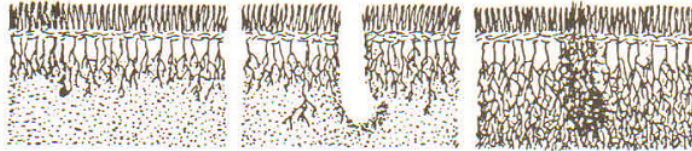
**(218) 525-6322**

3191 Elm Rd  
Duluth

Greg Carlson  
Owner

## Why aerate?

Compacted soil and heavy thatch are the two biggest obstacles to a beautiful lawn. They tend to suffocate grass plants by preventing air, water and nutrients from reaching the root zone. This means your lawn looks less than satisfactory in spite of adequate fertilization, water and tender loving care! Aeration opens up the thatch and helps relieve compaction. It should be a regular part of your annual



lawn maintenance program. Aeration is accomplished by the use of a machine equipped with cylinder-like spoons designed to penetrate and shatter the soil. Half-inch diameter plugs of thatch and soil are actually pulled from the ground during this process. The plunging action of the spoons into the ground opens up the soil — allowing the grass plants to breathe and promoting deeper, healthier roots.

## Major benefits of aeration . . .

- increases air, water and nutrient movement to the root zone
- intensifies decomposition of thatch
- helps relieve soil compaction
- stimulates new growth
- improves drainage
- provides a better environment for overseeding
- increases the effectiveness of applied fertilizers and control products
- incorporates organic matter into the soil
- increases tolerance to heat and cold

**All this adds up to a healthier lawn!**